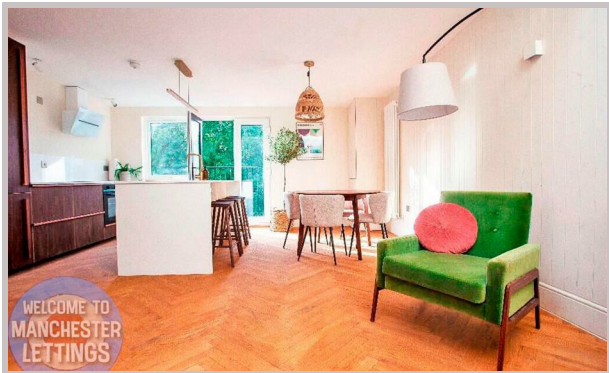




359 Wilbraham
Road
Manchester
M16 8NP



359 Wilbraham Road

£1,300 Per month

STUNNING TWO BED AVAILABLE END OF MAY £1300 INC BILLS

This charming Two-bedroom apartment sits within a converted period building in an excellent location close to the city centre and just a short walk from the lively Chorlton neighbourhood.

Inside, the home includes a spacious double bedroom with wooden wall paneling, an inviting open-plan living and kitchen area laid with solid French oak parquet flooring, and a stylish bathroom featuring raw terracotta flooring with underfloor heating. The living room also benefits from elegant wooden wall paneling, creating a warm and timeless atmosphere throughout.

The property enjoys access to attractive communal gardens and the convenience of off-road parking. With its blend of period charm, quality finishes, and a highly sought-after location, this apartment is an ideal home for professionals.

Enquire now to arrange a viewing.

- 2 SPACIOUS BEDROOMS
- FULLY FITTED KITCHEN
- £1300 PER MONTH
- SHORT WALK FROM CHORLTON
- EASY ACCESS TO THE CITY CENTRE

Local Authority

Council Tax Band

EPC Rating B

Contact

01613992619

hello@welcometomanchesterlettings.com

www.welcometomanchesterlettings.com

